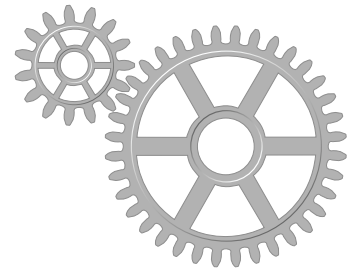


XMP Integration: Use XMP Metadata in the Workflow



Xinet® WebNative® Suite supports Adobe XMP metadata, with automatic reading and writing of XMP from the WebNative Suite interface—making it available to users worldwide.

Feature Overview

The Extensible Metadata Platform (XMP) is a rich-media format developed by Adobe that provides a way for desktop applications to embed information about a file within the file itself. The Xinet WebNative Suite database was designed to deliver faster searching of large file repositories, and to provide the ability to create customized metadata fields.

When you combine the two, WebNative Suite and Adobe XMP work together to enhance an already existing XMP-based workflow, changing how users work with metadata and creating greater access to it around the world. Users can now work with XMP metadata without access to the Adobe file or the need for other applications.

Read XMP from Adobe Files

Having a database that automatically reads XMP metadata offers a method for continually contributing valuable information as part of the day-to-day workflow—without any added effort. The WebNative Suite database can be configured to do this every time a compatible Adobe file is saved; and once it's in the database, this data can be searched, viewed, and modified through any Web browser.

When authorized users enter XMP data into an Adobe file, such as the window below, the data is read by the WebNative Venture database. XMP data entered in any Adobe application is automatically read by Venture, including InDesign, Photoshop, Illustrator and Bridge.

Adobe User Interface: Users enter XMP metadata, which is read and stored by the WebNative Venture database.

Features

- Read XMP metadata from supported Adobe files, including: AI, AVI, EPS, INDD, JPEG, MP3, PDF, PNG, PSD, TIFF, WAV—and more
- Write XMP metadata back to supported Adobe files through the WebNative interface
- Customize XMP metadata by creating new data fields on the client side and corresponding fields on the WebNative Venture server
- Use the Batch Apply feature to create metadata for a group of files
- Use with the Xinet Uploader to require or apply metadata, including XMP metadata

Benefits

- Users add important information to the database with a standard desktop application or Web browser, rather than using database or cataloging applications
- XMP metadata applied in WebNative becomes part of the file—so, if a file is moved from the server the metadata is still visible in the Adobe file
- With XMP metadata visible through WebNative, workflow is extended to anyone with a Web browser

Xinet, Inc.
2560 Ninth Street, Suite 312
Berkeley, CA 94710 USA
T +1 510.845.0555

sales@xinet.com
www.xinet.com

Write XMP to Adobe Files

WebNative Venture not only reads XMP automatically, but it also enables users to write XMP metadata back to supported Adobe files—right from a standard Web browser. Even if a user is working off-site or doesn't have access to a source file, writing XMP into the file is still possible.

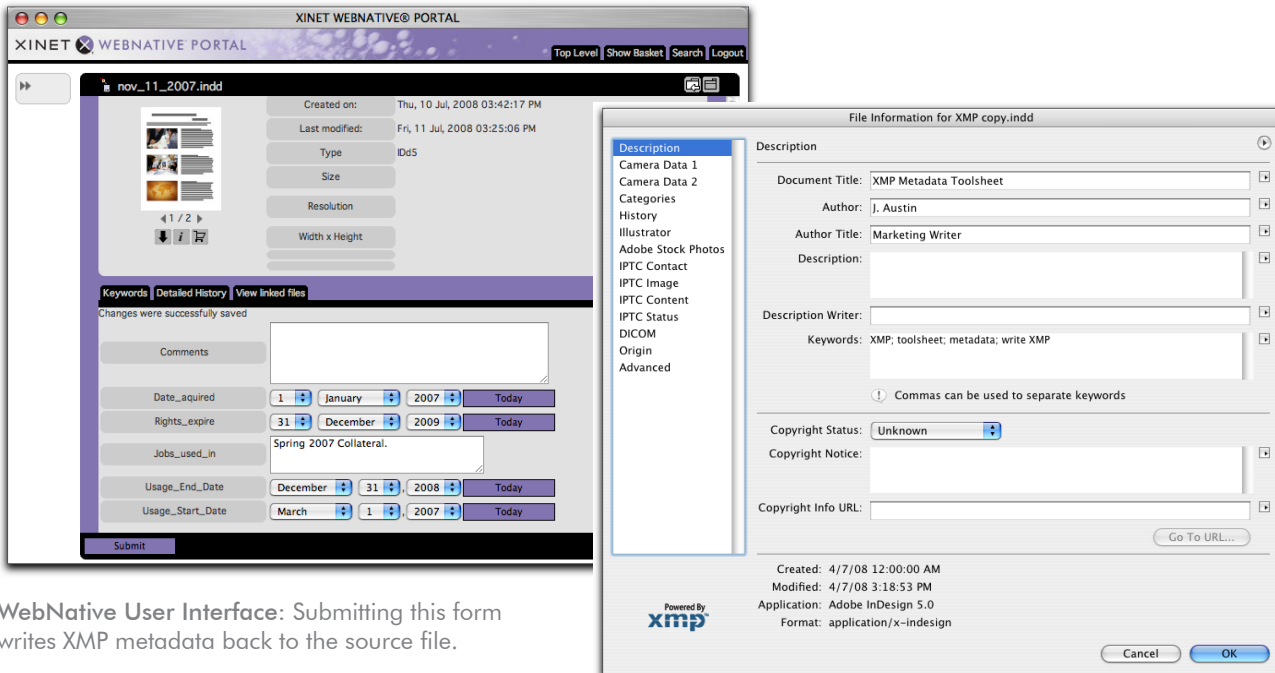
The WebNative Venture window below allows a user to write metadata directly to an Adobe file. Upon submitting this form, the XMP data is embedded into the Adobe file and can be viewed in the Adobe File Information window on the right. XMP metadata remains embedded in the assets, even after they are removed from the server. The data is also added to the Venture database and can be searched like any other metadata.

For More Information

For information about related products and features, ask about:

- Triggers and Actions

Contact sales@xinet.com for a complimentary Web demo



WebNative User Interface: Submitting this form writes XMP metadata back to the source file.

Adobe User Interface: Metadata has been written to the Adobe file using WebNative.

Customize XMP for Your Site

One of WebNative's key features is its workflow flexibility. This means that Xinet customers determine their own workflow—not the other way around. Administrators decide which templates are made available to which users, and then establish user permissions based on individual requirements.

In addition to the standard Adobe data-field templates that come with WebNative Venture, Xinet also supports custom XMP fields. Because all metadata is embedded into the Adobe file, your custom fields will be visible through Adobe applications whether the file is on a Xinet server or not.